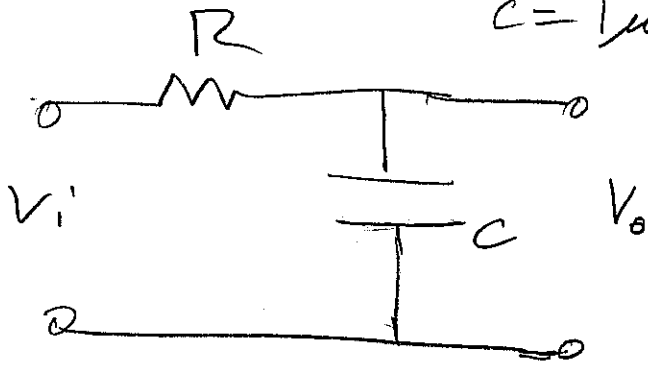


$R = 1k$
 $C = 1\mu F$

$V_i = 1VP-P @ 2KHZ$



① $\frac{V_o}{V_i} = \underline{\hspace{2cm}}$ IN GENERAL?

② $\left| \frac{V_o}{V_i} \right| = \underline{\hspace{2cm}}$
 @ 2KHZ

③ $\angle \frac{V_o}{V_i} = \underline{\hspace{2cm}}$
 @ 2KHZ

④ IF $\left| \frac{V_o}{V_i} \right| = -10dB$, WHAT WOULD THE FREQUENCY OF V_i NEED TO BE (ASSUMING SAME R AND C AS ABOVE)?

⑤ WHAT IS f_c IN HZ AND ω_c IN RAD/SEC