

Strange Case of Dr. Jekyll and
Mr. Hyde By Robert Louis
Stevenson

Group Presentation: Andrea,
Amber, Sanghee, Hamadi, and
Steven.

Background on the author




- **Stevenson renounced his religion and became an atheist.**
- **Stevenson studied law after his father rejected him for renouncing his faith.**
- **Forensic Science is developing in the 1800's.**
- **The novella reflects the changes in scientific discovery. Ex.**

Background on Author Continued

- The discovery of forensic science during this era is involved in Dr. Jekyll and Mr. Hyde because it coincides with Stevenson's law studies, so those two aspects go into the "solving mystery" portion of the novel.
- Advancements in medicine increased the popularity of "science" over "religion."
- Also, Robert Louis Stevenson had his own encounters with medicine due to his pulmonary disease that he had throughout his life. Living in a society that is beginning to flourish in medicinal discoveries and being around and involved with medicine himself, these aspects affect Stevenson's novel, in that the novel



“Plainly, the child thought
sickness a punishment,
and since he was sick



more often than most, he
must have thought himself
more wicked than most.”

(p. 28)

“Saranac (Mrs. Fairchild
had a slight cold) ...
‘sign language through a
closed
window’”





“another
‘enchanted
young lady whom
you have seen,
or rather from her
inspiration ...
letters
threatening
exposure, etc ...’
“(p. 57)

WHAT IS CALVINISM?

Rev. William D. Smith

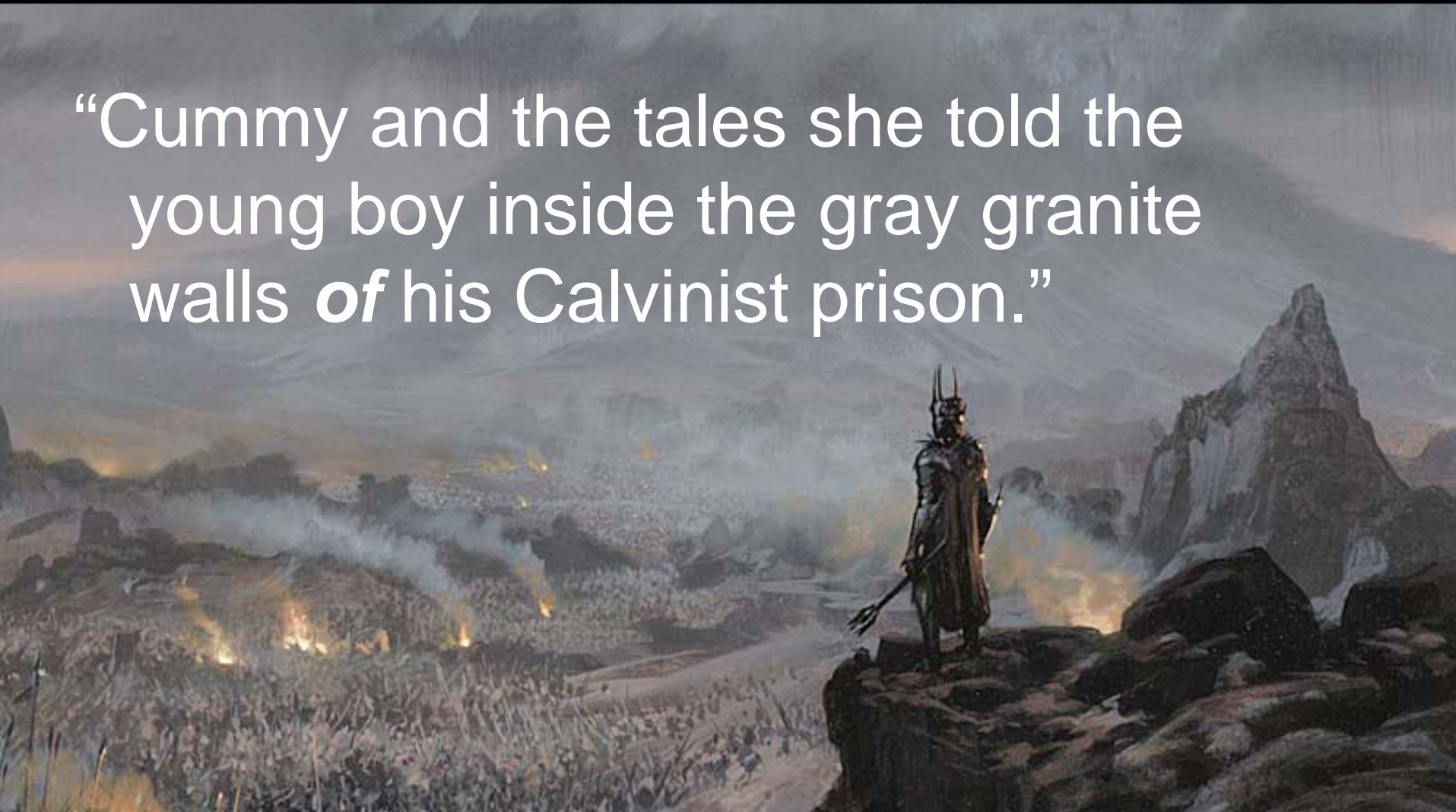


Dialogues on the Westminster Confession of Faith

“For Thomas Stevenson the study of God’s Word ... was the highest pursuit.”

(p. 7)

“Cummy and the tales she told the young boy inside the gray granite walls *of* his Calvinist prison.”



Early Career

- Robert Louis Stevenson began writing essays in late 1870's
- He worked with Virginia Woolf's father, Leslie Stephen on a journal.
- His first novel was "Treasure Island."
Considered a boy's adventure tale.

William Deacon Brodie

- Stevenson is inspired to write with W. E. Henley, “Deacon Brodie or the Double Life.” A play based on the real life William Deacon Brodie.
- Brodie’s double life inspired Stevenson to write a play, “Deacon Brodie.” Stevenson collaborated with W. E. Henley to write the play, which did not do well.

Charles Darwin

- Darwin's *Origins of Species* had a huge impact in the Victorian Era. Evolution became popularized in various forms of writing. Stevenson uses evolution to illustrate Dr. Jekyll's "struggle with existence" to show how his dark side is stronger than himself.
- Darwin proposed "natural selection" which became widely popular in the late 1800's

First Modernist

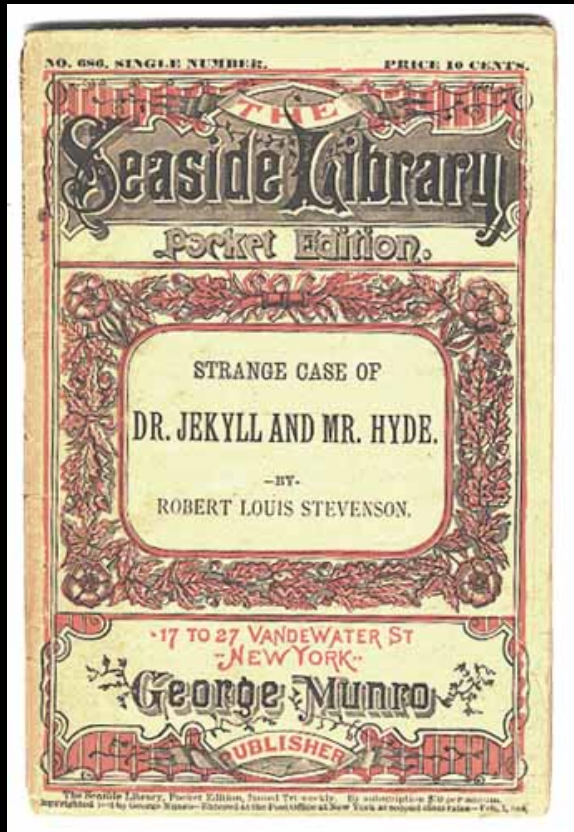
- Stevenson is considered the last Victorian or the first modernist of the 1880's. His form of writing is realistic and is structured for a lower literature grading system (Luckhurst, intro).
- Stevenson's novella is puzzling to critics because his novella contains elements of gothic horror as well as psychological realism (Luckhurst).

First Editions

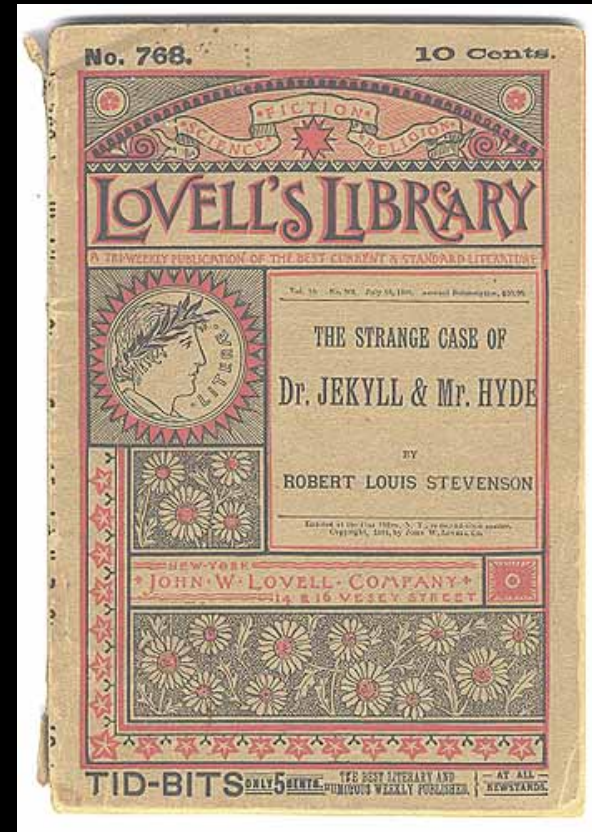
- 40,000 copies of this book were sold in 1886.
- Pirated copies sold tens of thousands in America (Luckhurst).
- The first draft of *Strange Case of Dr. Jekyll and Mr. Hyde* are burned along with another short story accompanying it. Fanny Stevenson, his wife, greatly criticized the early draft.
- Extras:

1886 Copy of *Strange Case of Dr. Jekyll and Mr. Hyde* and Mr. Hyde in America.

An American Pirated Version of the story.



Another Pirated copy.



Editions Continued

- Another copy is released in 1916. This copy contains different short stories along with the novella.
- “A Chapter on Dreams” foretells of Stevenson’s dream on the transformation of Dr. Jekyll and Mr. Hyde.
- http://books.google.com/books?id=iB0XAAAAYAAJ&dq=the+strange+case+of+dr.+jekyll+and+mr.+hyde&printsec=frontcover&source=bn&hl=en&ei=kyx7S5jMDYbYtgP-wbS8Cw&sa=X&oi=book_result&ct=result&resnum=4&ved=0CBQQ6AEwAw#v=onepage&q=&f=false

Impact of Dr. Jekyll and Hyde: Social and Literary Impact

- Jekyll and Hyde is a “modern myth”, the story is known widely even by those who have never read the book.
- *Jekyll and Hyde* has become “shorthand” for multiple personality disorder.
- *Jekyll and Hyde* helped usher in new kinds of psychology, some ideas even being built on the story.

Social and Literary Impact Cont.

- Stevenson's dark portrayal of London had a major influence on late Victorian Gothic novels such as Oscar Wilde's *Dorian Gray*, Arther Machen's *Helen Vaughan*, and Bram Stoker's *Count Dracula* (Introduction of Jekyll and Hyde xxix)
- Allegorical interpretations of the book sprung up, some suggesting that the story was about sexual depravity, and some suggesting that it was about the dual life of the Victorian homosexual.

Early Reception

- The first copies appeared in 1886. People were unsure about how to react to it because it came from a well known author but was marketed as a ‘shilling shocker’.
- *Jekyll and Hyde* became linked to anxiety about “violent class war” that occurred as a result of a violent riot suppression in Trafalgar Square in 1887.

Later Reception

- Journalist W.T. Stead wrote in the wake of Stevenson's death, 'What the public does not yet realize is that the story is more than an allegory. It is a setting forth in the form of an imaginary tale a foreshadowing of the most startling scientific discovery which will probably be fully established early in the twentieth century, viz., that the disintegration of personality is not merely possible but is of constant occurrence.'
(Introduction of *Jekyll and Hyde*)
- The killings of Jack the Ripper were thought associated with the stage version of *Jekyll and*

Adaptations

- *Strange Case of Dr. Jekyll and Hyde* has inspired over 123 films and other adaptations, almost none of which have stayed true to the original.
- Nearly every adaptation since T.R. Sullivan's play in 1887 has given knowledge of Jekyll's transformation early on, while the book doesn't reveal this secret until the end. This is done so by viewing the story in the perspective of both Jekyll and Hyde at the same time.
- John Addington Symonds said of *Jekyll and Hyde* adaptations: "the most significant thing about the posthumous history of *Jekyll and Hyde* in its myriad adaptations is that nearly

Film Adaptations

- <http://www.youtube.com/watch?v=JnznMw7PjJI&feature=related>
- <http://www.youtube.com/watch?v=3ErzUI5LeDw>
- <http://www.youtube.com/watch?v=cEZKOrlOLX0>
- <http://www.youtube.com/watch?v=cwpngy7iHzl>

Dr. Jekyll

- Experimental chemist
- Doesn't enjoy feeling evil
- Upholds morals and social standards
- Suspicious when talking about Mr. Hyde in his will
- Believes that everybody has two persons living inside of them. A good and a bad side.
- Split personality

Mr. Hyde

- Contorted face - look of Satan p.16
- Has no conscience ex. Trampled girl on the city street and didn't give a second look
- Wanders the streets at night but hides indoors during the daytime
- He is made of pure evil. He has no good in him

Mr. Hyde Continued

- He and Dr. Jekyll are two in the same body
- Hyde is Dr. Jekyll's evil side
- Dr. Jekyll likes the feeling of being Mr. Hyde. "I felt younger, lighter, happier in body"
- Mr. Hyde comes to dominate both personas. Dr. Jekyll takes Hyde's shape more often than his own.
- By the end, Jekyll himself no longer exists and only Hyde remains.

Characterization

- Battle between good and evil
- Jekyll slowly loses control over his own body and emotions
- He believes that the change to Mr. Hyde without a potion is dangerous
- Jekyll wants to stay Jekyll, not Hyde
- Evil eventually wins
- Jekyll and Hyde are uninteresting taken alone.
- Both relatively flat characters
- The nature of their interrelationship gives the novel its power
- The dominance of Mr. Hyde expresses the true nature of humans

Bibliography

- Ed. Roger Luckhurst. *Strange Case of Dr. Jekyll and Mr. Hyde and other Tales*. By Robert Louis Stevenson. New York: Oxford, 2008.