

San José State University

Campus Master Plan Advisory Committee Introduction

Welcome!

- Please consider calling in to Zoom and using the Participant ID to **connect by phone and video** for a more stable sound experience and that you show up as one Participant. #Participant ID#
- We hope to see everyone and would like to have **Video Cameras On**
- Please “**Rename**” to include your Representative Group, for example “Jane Doe - Faculty”

Connect your phone and the meeting by entering in your Participant ID starting with # and ending with #

Zoom Meeting Participant ID: #####

SJSU Campus Master Plan Advisory Committee Meeting

Meeting ID 872 9441 8923

Host

Password

Invite Link

Copy Link

Participant ID #####

You are connected to the Zoom global network via a data center in the United States.

Choose ONE of the audio conference options

Phone Call Computer Audio

Dial +1 646 876 9923
+1 312 626 6799
+1 301 715 8592
+1 253 215 8782
+1 346 248 7799

Meeting ID 872 9441 8923

Participant ID #####

Password

Participants

Participants (1)

Sammy Spartan, Mascot More

Rename Edit Profile Picture

San José State University

Campus Master Plan Advisory Committee Introduction

Presentation to Advisory Committee

September 21, 2020

- Introductions



Advisory Committee – Steering Committee

Vincent Del Casino, Jr. - Provost and SVP, Academic Affairs, Co-Chair

Charlie Faas - Vice President, Administration and Finance/CFO, Co-Chair

Sonja Daniels - Associate Vice President, Campus Life*

Traci Ferdolage - Senior Associate Vice President, Facilities Development & Operations*

Michelle Frey - Creative Director, Strategic Communications and Marketing*

Miri Van Hoven - Associate Dean for Research, College of Science*

Advisory Committee

Thalia Anagnos, Vice Provost, Undergraduate Education

Beth Colbert, AVP, University Advancement and Campaign Operations

Eric Cross, Parking Manager

Jason Dillon, Interim AVP, Information Technology Infrastructure and Operations

Jocelyn Jones-Trammell, Director of Sustainability, Campus Sustainability & Associated Students

Alison McKee, Vice Chair of the Academic Senate, Professor, Film and Theatre

Cindy Marota, Director of Accessible Education Center

Hilary Nixon, Deputy Executive Director, Mineta Transportation Institute

Laxmi Ramasubramanian, Department Chair & Professor, Urban and Regional Planning

Tiffany Rodriguez, Department Manager of Transportation Solutions

Ron Rogers, Associate Dean for Academic Programs, College of Social Sciences

Winifred Schultz-Krohn, Professor, Occupational Therapy

Edwin Tan, Office of the President, Director of Advocacy and Community Relations

Mike Waller, Senior Associate Athletics Director for Business Operations

Michael Brilliot, City of San Jose, Department of Planning, Building and Code Enforcement

Katherine Cushing, Executive Director, CommUniverCity

Hong Lin, University Planner, CSU Chancellor's Office, Capital Planning, Design & Construction

SJSU Campus Master Plan Team

Ashraf Fouad, Senior Director of Planning, Design and Construction (PDC)

Chia Tsai, Associate Director of Planning, PDC

Ayano Hattori, Senior Project Manager, PDC

JoAnn Hansen, Facility Space Planner, PDC

Campus Master Plan Consultant Management Team



CHRISTEN SOARES
ARCHITECTURAL MASTER PLAN
Field Paoli
Architect/Project Principal



JANE LIN
URBAN DESIGN AND PLANNING
Urban Field
Urban Designer/Project Manager



LINDA DALTON
CAMPUS MASTER PLANNING
Dalton Education Associates
Academic Planner



YANN TAYLOR
ARCHITECTURAL MASTER PLAN
Field Paoli
Architect



TRISH BECKMAN
ARCHITECTURAL MASTER PLAN
Field Paoli
Architect



SHAWN RINEHART
ARCHITECTURAL MASTER PLAN
Field Paoli
Zoom Moderator



FRANK FULLER
URBAN DESIGN AND PLANNING
Urban Field
Urban Designer

Campus Master Plan Consultant Technical Team



MARCO ESPOSITO
LANDSCAPE ARCHITECTURE
SWA
Landscape Architect



KEVIN FEENEY
ECONOMICS
Keyser Marston Associates
Economist



MEGAN GEE
ENGINEERING
Arup
Mobility Lead



RICK KOS
**GEOGRAPHIC
INFORMATION SYSTEMS**
GIS Specialist and SJSU Faculty



ERICA LEVINE
ENGINEERING
Arup
Sustainability Lead

Agenda

- Campus Master Plan, Looking Forward to 2040
 - Purpose and Content
 - Process, including Campus and Community Engagement
 - Advisory Committee Role
- Discussion of Key Topics
 - Academics and Enrollment
 - Campus Life
 - Physical Environment on Campus
 - Off Campus Connections
- Next Steps

Campus Master Plan, Looking Forward to 2040

2040

**Strategic Plan
Transformation 2030**

**Campus
Master Plan**

**Main Campus
Landscape Plan**

**Main Campus
Utilities Master
Plan**

**TDM/Mobility
(Future)**

**Main Campus
Facilities
Development Plan**

**Sustainability
Reports**

**South Campus/
Athletics Plans**

**Housing Master
Plan**

CAMPUS MASTER PLAN

**Vision for
SJSU based on
Transformation
2030**

**Anticipation of
Future Spatial
Needs**

**Strategies for
Future Growth**

**Campus
Land Use
and
Buildings**

**Campus Public
Realm**

**Campus
Mobility**

**Campus
Infrastructure**

Capital Funding Proposals

Campus Context



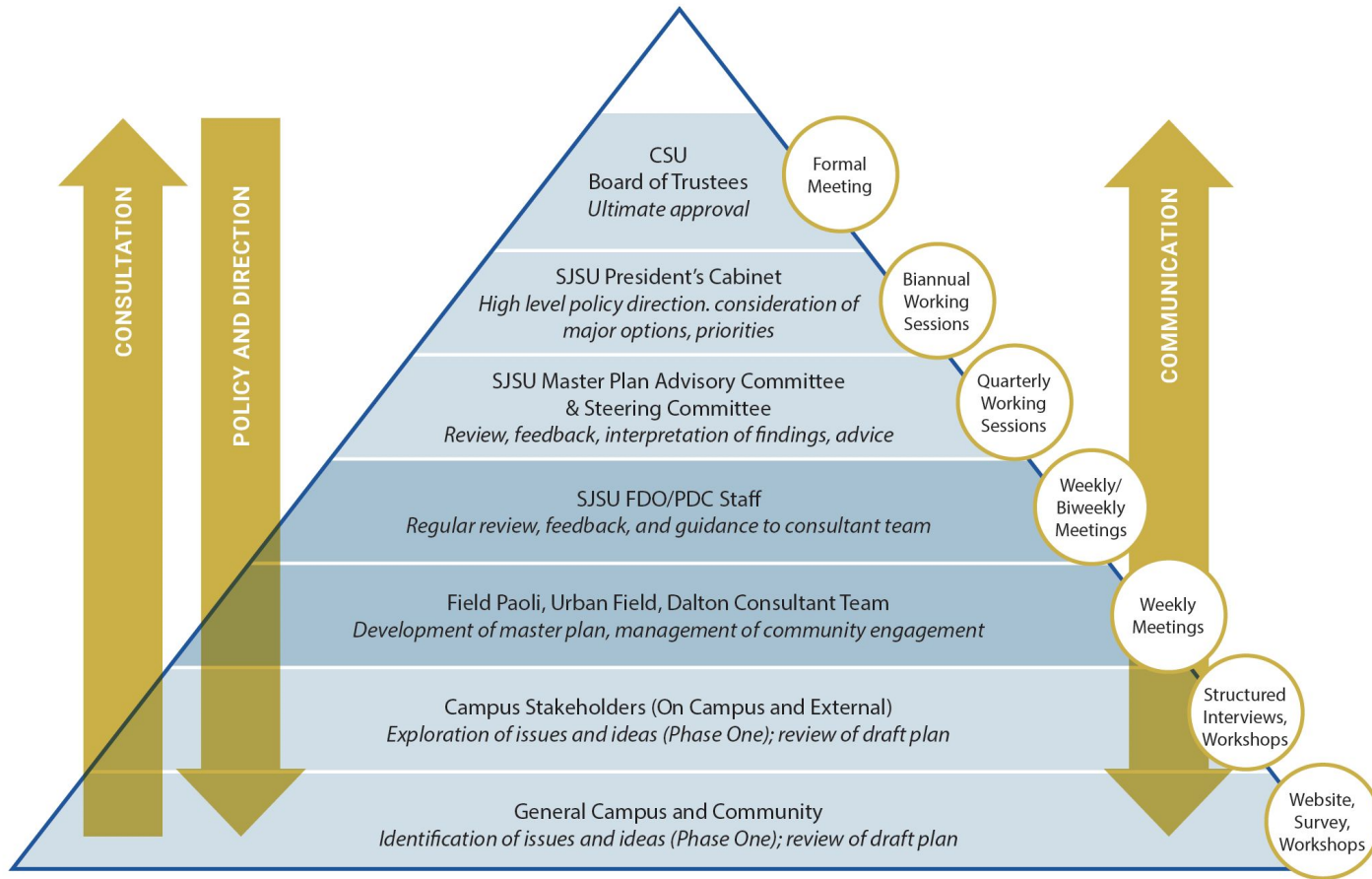
“As the need for synchronous place and time evaporates, investments in the physical campus will be questioned as never before. For campuses to be justified, they must provide values that are not available by other means. To become such places, they need to be adapted and transformed as if their survival were at stake.”



(From SCUP 2019, *The Physical Campus in a Digital World*)

What does this mean in a post-COVID world?

Campus Master Plan Process



CAMPUS MASTER PLAN CONSULTATION, COMMUNICATION, ADVICE, AND DIRECTION

Campus/Community Engagement



Website

Advisory
Committee



Stakeholder
Interviews



Educational
Opportunities



Online Survey



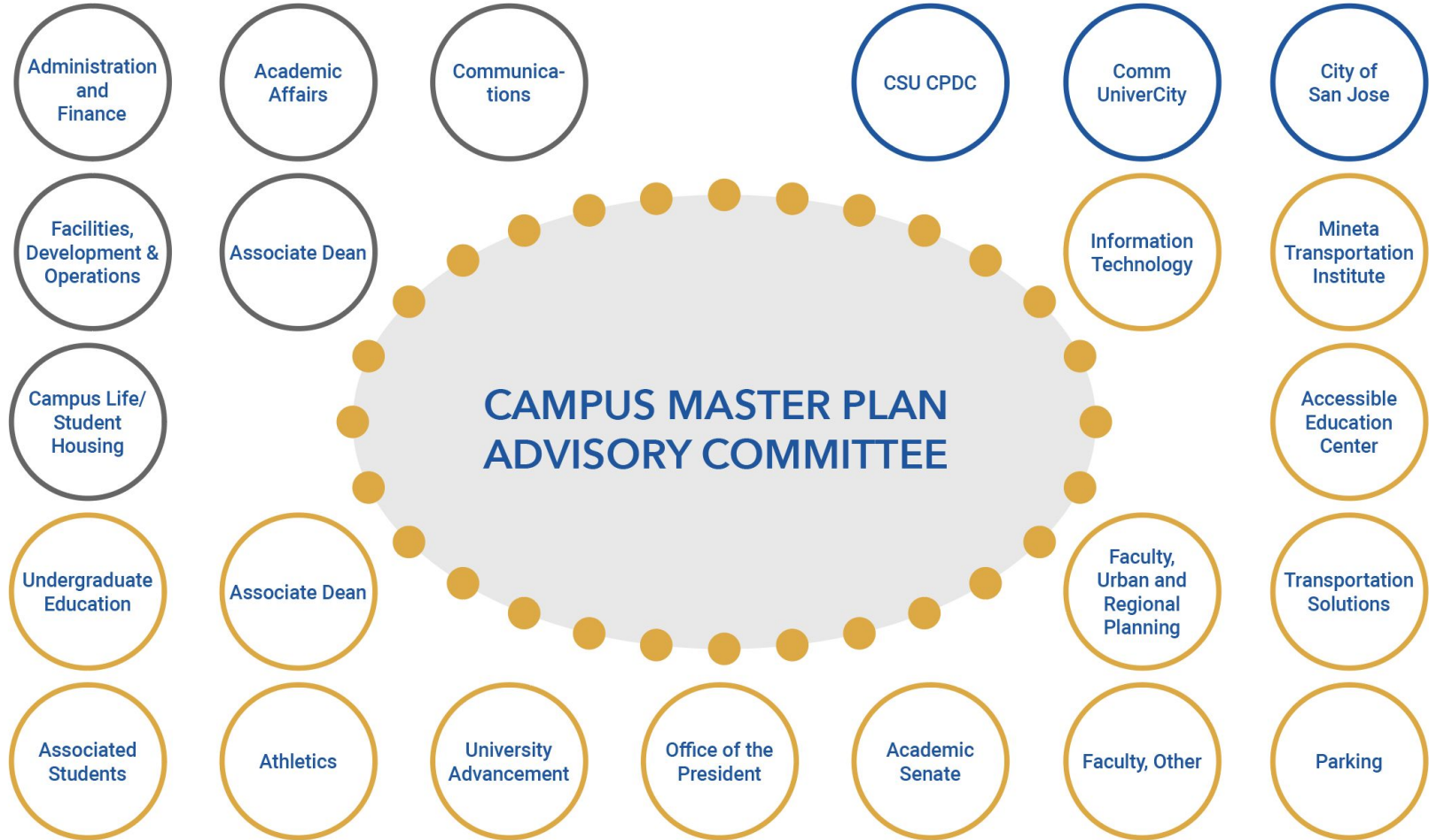
Workshops



Town Hall/
Open House

STEERING COMMITTEE

CAMPUS AFFILIATES

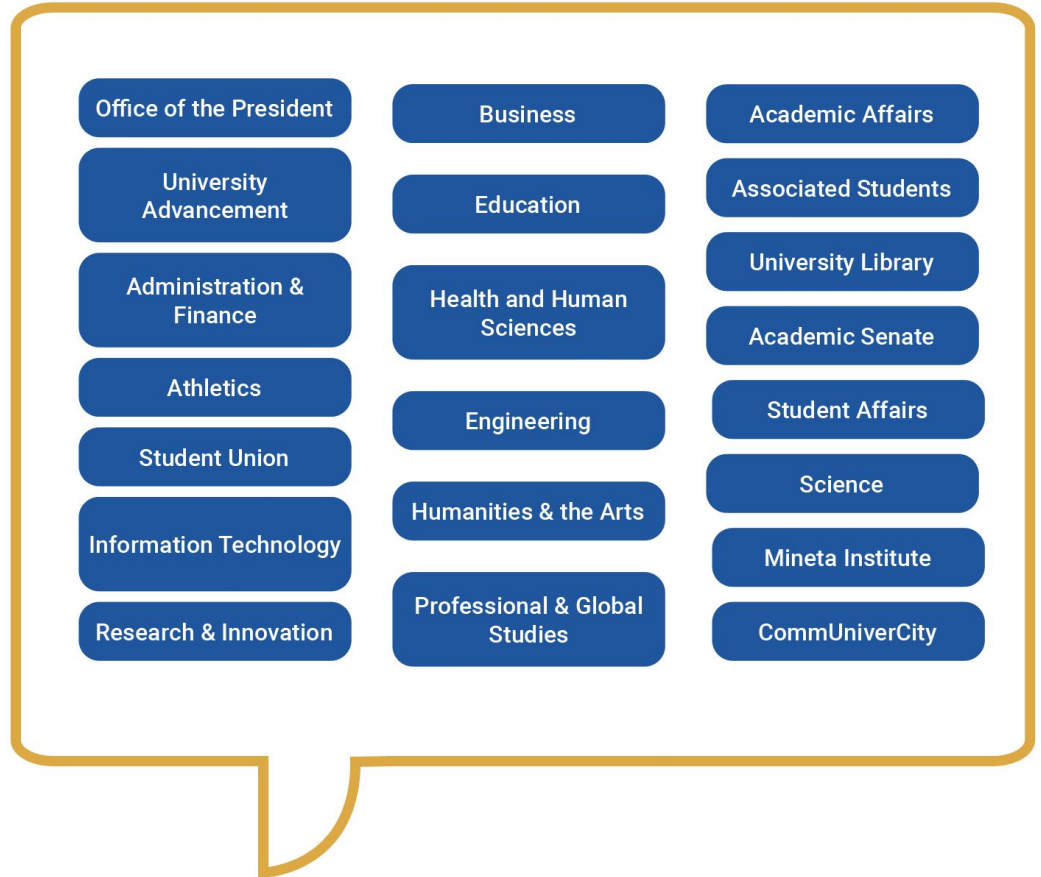


Stakeholder Interviews

Objectives/Process:

- Initial meetings to identify issues and opportunities (Fall 2020)
- Later meetings to provide updates and receive feedback (TBD)

Representation: Campus organizations and groups including colleges, administrative divisions, faculty, and students



Potential Educational Opportunities

Urban and
Regional Planning

College of
Business:
MS in
Transportation
Management

Environmental
Studies

Civil and
Environmental
Engineering

College of
Education: Future
Learning Initiative

Department of
Public Health

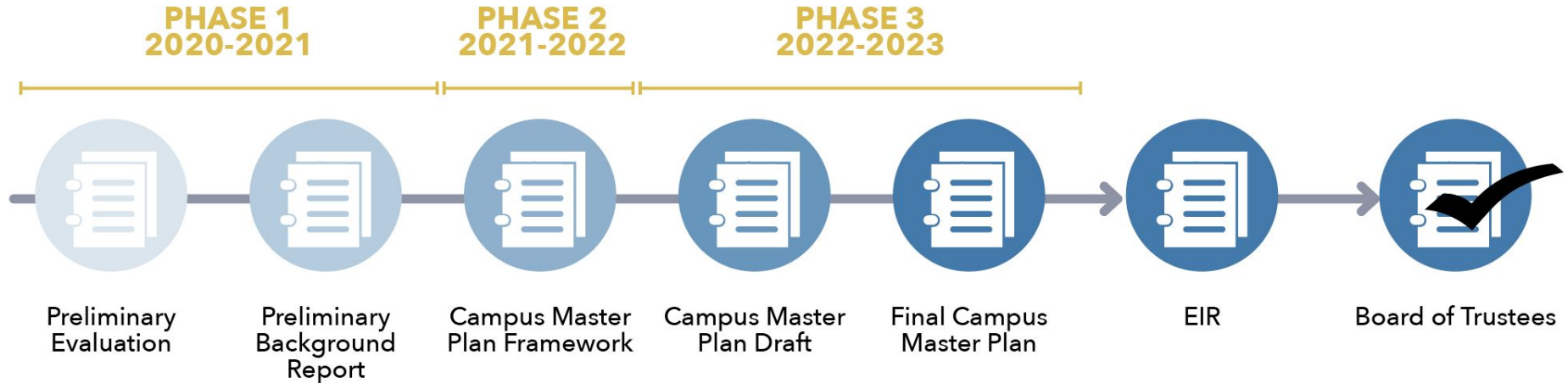
Department of
Interior Design

Department of
Biology

Mineta
Transportation
Institute

Others?

Campus Master Plan Process



Advisory Committee Responsibilities

PHASE 1

- Identify issues to be addressed
- Advise on campus/ community engagement and stakeholder involvement
- Review and comment on communications and preliminary findings

PHASE 2

- Provide feedback on draft plan policies and graphics
- Review and comment on draft reports before they are forwarded to the President's Cabinet or the larger SJSU community

PHASE 3

- Review and comment on final plan and related reports before they are forwarded to the President's Cabinet or the larger SJSU community

Steering Committee

- Sets agenda in advance of each meeting of the whole Advisory Committee
 - Addresses interim needs

Advisory Committee Schedule

Fall 2020



- Introductory Meeting (September)
- Fall Summary: Preliminary Evaluation of Issues and Opportunities (December)

Spring 2021



- Discussion of Preliminary Evaluation of Issues and Opportunities (January)
- Campus and Community Open Houses
- Review Draft of Background Report (May)

Plan Duration



- *1-2 meetings per semester (typically 2 hours)*
- *Follow communications regarding the Campus Master Plan*

Advisory Committee Interactive Discussion

Key Topics – Interactive Discussion

For each of the following categories, what do you consider to be the most important topics that the Master Plan should cover in a post-COVID world?

1. Divide into Groups and Select Spokesperson
2. Brainstorm Topics and Questions (45 minutes)
3. Report Back (30 minutes)

**Academics
and
Enrollment**

**Campus
Life**

**Physical
Environment
on Campus**

**Off-Campus
Connections**

Group Roles and Rules

Zoom Moderator - Assigns Break Out Rooms and Host the Meeting

Facilitator - Encourages the conversation and requests agreement to record comments

Scribe - Adds notes to record the conversation on Jamboards

Timekeeper - Keeps an eye on the time

- 8-9 minutes per board
- 45 minutes total time

Participants - Advisory Committee Members - Contribute to Jamboards and discussion

Spokesperson - Reports back when we return to the main room

“Joined By” - Observers

***Zoom Sessions may be recorded**

Group Rules

- Defer judgement. You never know where a good idea is going to come from
- Encourage wild ideas, but stay focused on the topic
- Try to give all participants a chance to speak
- Build on the ideas of others
- One verbal conversation at a time
- Be as visual as possible
- Go for quantity
- Everyone is encouraged and allowed to organize the board

Academics and Enrollment

Facilitated by Linda Dalton,
Campus Planning

Joined by: JoAnn Hansen,
Timekeeper

Joined by: Trish Beckman, Scribe

Thalia Anagnos, Vice Provost, Undergraduate Education

Vincent Del Casino, Jr., Provost and SVP Academic Affairs

Alison McKee, Vice Chair of Academic Senate

Laxmi Ramasubramanian, Department Chair & Professor Urban
and Regional Planning

Ron Rogers, Associate Dean for Academic Programs, College of
Social Sciences

Miri Van Hoven, Associate Dean for Research, College of Science

Campus Life

Facilitated by Christen Soares, Architect

Joined by: Ayano Hattori, Timekeeper

Joined by: Frank Fuller, Scribe

Beth Colbert, AVP, Univ. Advancement

Sonja Daniels, AVP, Campus Life, Housing

Michelle Frey, Director of Communications

Winifred Schultz-Krohn, Professor Occupational
Therapy

Mike Waller, Senior Associate Director of Athletics

Physical Environment on Campus

Facilitated by Marco Esposito,
Landscape Architect

Joined by: Chia Tsai, Associate Director
of Planning, PDC

Joined by: Rick Kos, Scribe

Joined by: Yann Taylor, Timekeeper

Joined by: Erica Levine

Jason Dillon, Interim AVP Information Technology

Traci Ferdolage, Senior AVP Facilities Development and
Operations

Jocelyn Jones-Trammell, Director of Sustainability

Hong Lin, University Planner, CSU Chancellor's Office

Cindy Marota, Director of Accessible Education Center

Off Campus Connections

Facilitated by Jane Lin, Urban Designer

Michael Brilliot, City of San Jose Planning Department

Eric Cross, Parking Manager

Joined by: Ashraf Fouad, Senior Director of PDC

Katherine Cushing, Executive Director of CommUniverCity

Joined by: Megan Gee, Scribe

Charlie Faas, VP, Administration and Finance

Joined by: Kevin Feeney, Timekeeper

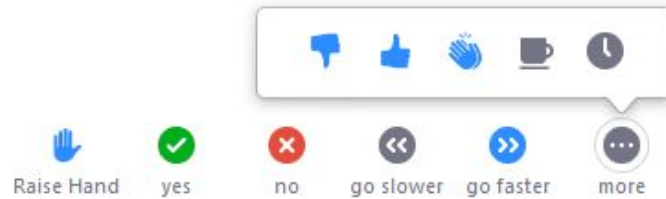
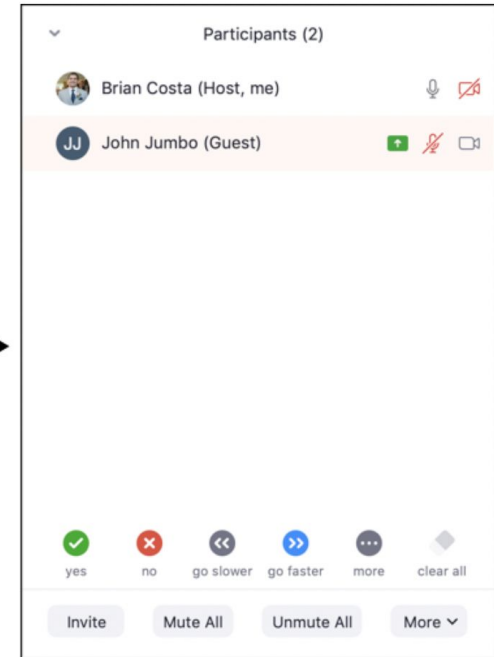
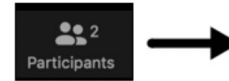
Hilary Nixon, Executive Director Mineta Transportation Institute

Tiffany Rodriguez, Department Manager Transportation Solutions

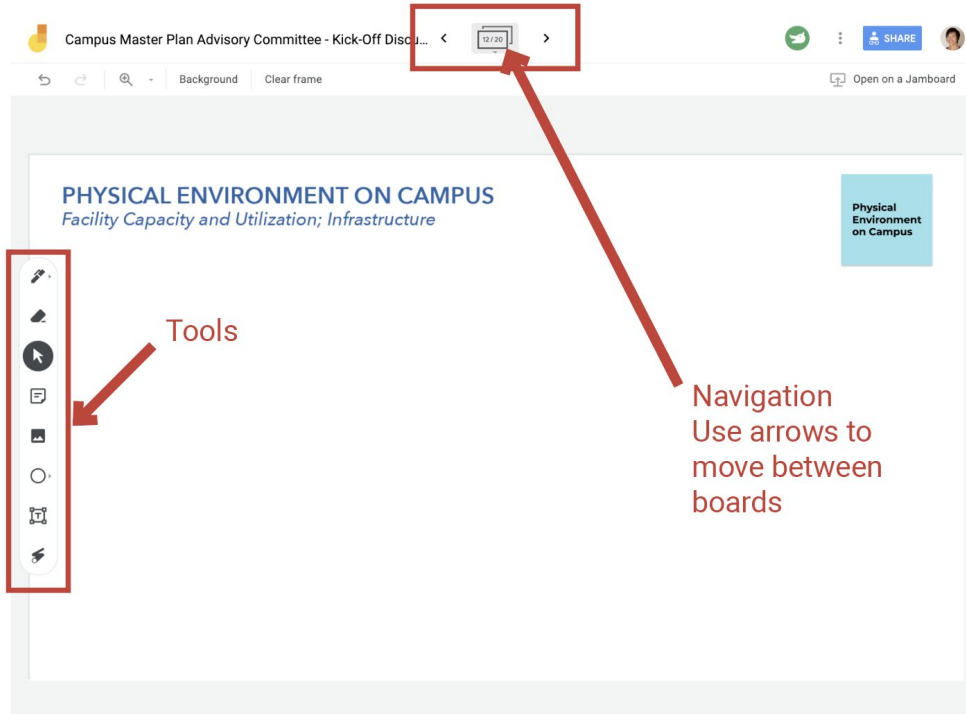
Edwin Tan, Office of the President, Director of Advocacy and Community Relations

Ways to Communicate in the Breakout Room

1. At the beginning of each board there will be 30-60 seconds for quiet brainstorming time on each board.
2. If it's not your turn to talk, but you want to say something use the *Chat*
3. Non-verbal feedback encouraged!



Jamboard (Virtual Whiteboard) Instructions



Academics and Enrollment
Boards 1-5

Campus Life
Boards 6-10

Physical Environment on Campus
Boards 11-15

Off Campus Connections
Boards 16-20

Let's Practice!

Jamboard

Please go to Board 2



Next Steps

Homework

- Follow Up by September 30, 2020
 - Share internally, review and comment on Meeting Minutes and Jamboards by September 30, 2020
 - Support scheduling efforts for stakeholder interviews.
 - Campus Master Plan Contact: Chia.Tsai@sjsu.edu

Thank you for helping us with the SJSU Campus Master Plan!

Check progress on the Campus Master Plan Website (forthcoming)

<http://newdev.sjsu.edu/campusmasterplan>

