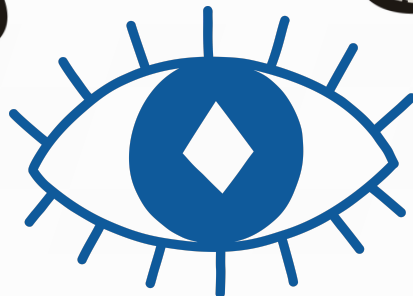




GET IN THE



ZONE

What to Do Before, During and After Lectures

10/3

2 PM - 3 PM

MLK 230

Do you struggle with focusing; knowing what's important to note down; and staying actively engaged in a lecture? Join us to learn strategies to get the most out of your class.

Event is wheelchair accessible. Individuals requiring Sign Language Interpreters, live captioners, or other accommodations should contact aec-info@sjsu.edu or 408-924-6000 as soon as possible.